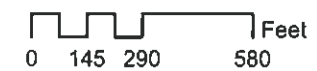


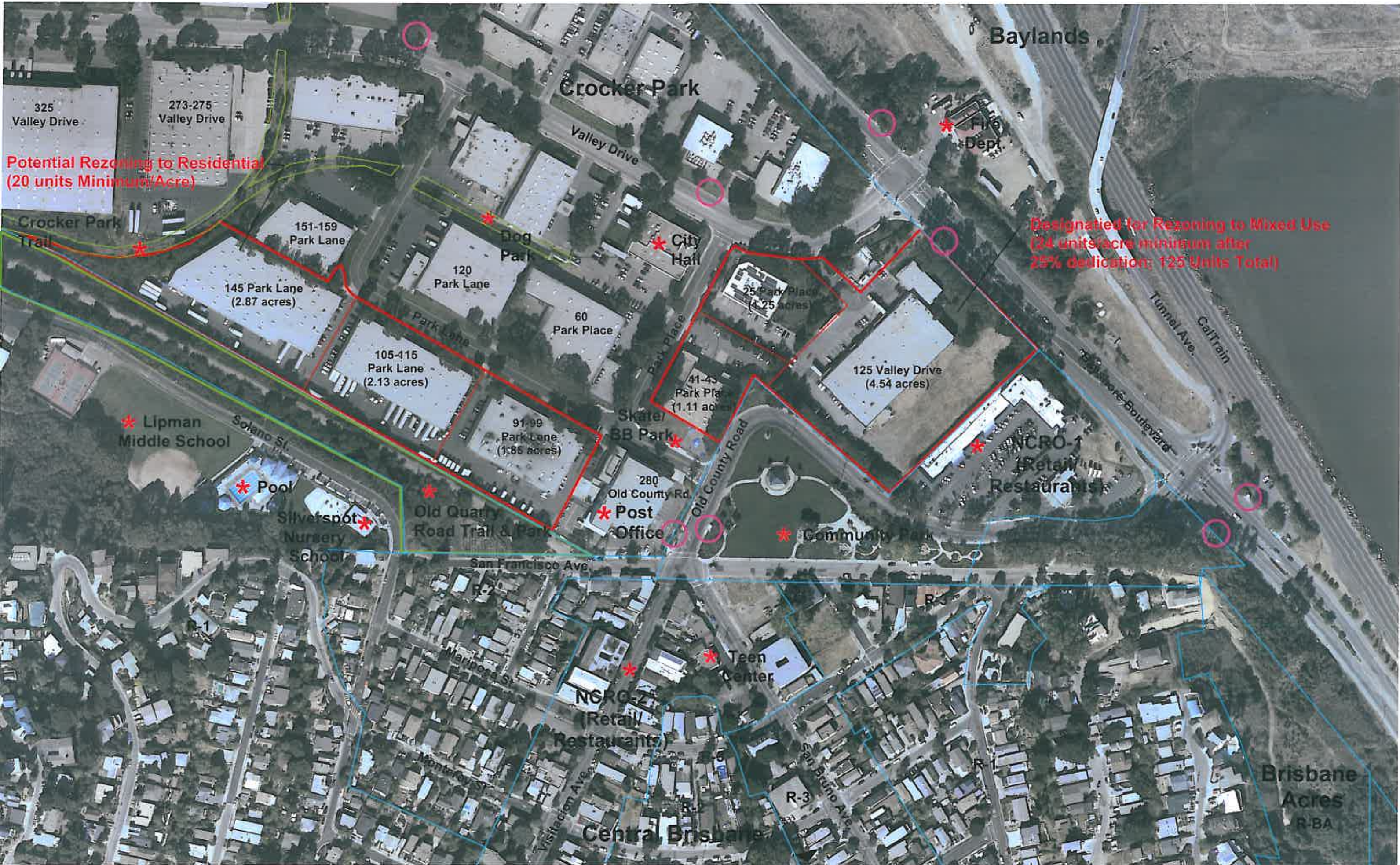


**Figure 1**  
**Designated and Potential**  
**Residential Rezoning Sites**

○ Bus or Shuttle Stop (Approximate Location)

Notes: Due to the number of small parcels in the planned R-SWB district, parcel lines are not shown here. See other map for details and potential parcel aggregation.






Potential Rezoning to Residential  
(20 units Minimum/Acre)

Designated for Rezoning to Mixed Use  
(24 units/acre minimum after  
25% dedication; 125 Units Total)

**Figure 2**  
**City Center Potential Rezoning & Amenities (Crocker Park)**

 Bus or Shuttle Stop (Approximate Location)

 Existing Community Amenity or Services

 Feet  
0 50 100 200

